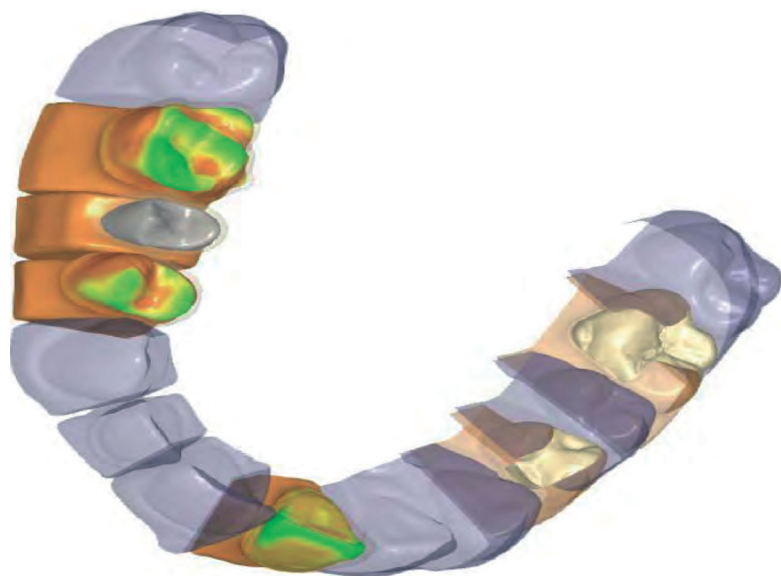


88CAD is a dedicated software to design and mould copings, bridges, full arches, inlays, onlays, veneers, customized abutments, bars and much more.

This software enables also beginners who enter the "digital" world for the first time to design complete anatomies and reduced crowns by means of intuitive and easy to use tools.

It exports the data in .stl "open" format, which can be processed by any CAM software and transfers them to any milling and prototype centre.



Features:

- Perfectly integrated with 88SCAN, but can import data from any type of scanner.
- Cad files exported in "open" .stl format.
- Compatible with other CAD systems.
- Multiple computer-based functions offer the user optimized and time -saving results (automatic margin line search, calculation of the optimal insertion/removal direction of undercuts, automatic positioning of the selected anatomies with adaptation to antagonist and adjacent, reduction of parameterized and controlled anatomic shapes).
- Equipped with deformation and sculpturing tool set for surface modifications and digital simulation of manual operations (material addition/removal, polishing).
- Surface and thickness analysis and control tools.
- Wide range of prosthesis designs (single or multiple anatomic crowns from the available software library, or imported and copied from customized wax shapes, single or multiple reduced copings obtained from the complete anatomic crown, single or multiple simple copings, inlays and outlays, facets).
- Easy-to-create and flexible reinforcing connectors and collars.
- Supports a wide range of implant systems: cemented, single screwed-on and bridges.
- Possibility to insert attachments in the designed structure by importing them from the library
- Possibility to model bars with different sections and axis directions, traced in a free and intuitive way in order to be automatically adapted to the gingiva
- Possibility of customized libraries of anatomies, implants, bars and attachments